

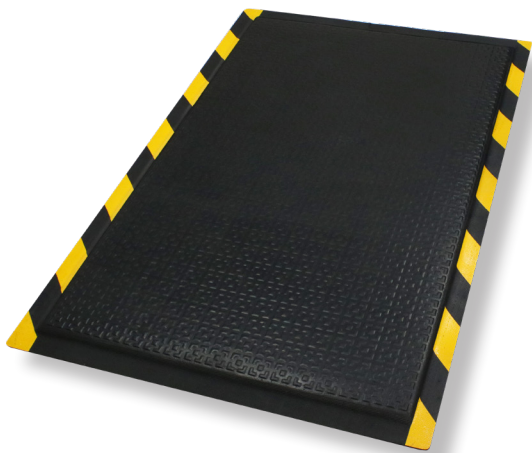


# DuraComfort Mats

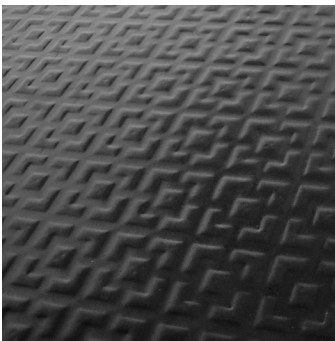
## Formerly Happy Feet

### Anti-Fatigue Mats • Wet Area • Indoor

DuraComfort is a heavy-duty anti-fatigue mat that features a dense foam cushion encapsulated in nitrile rubber, making it suitable for both wet and dry environments.



- **Comfortable** – 1/2" dense foam cushion and nitrile rubber surface provide excellent anti-fatigue qualities
- **Safe** – Certified high-traction by the National Floor Safety Institute (NFSI)
- **Durable** – Nitrile rubber surface is penetration proof; borders will not crack or curl
- **Versatile** – Welding safe; grease/oil proof; chemical resistant; ESD rating of electrically conductive
- Available in two surface types: *Textured Surface* for dry/damp environments or *Grip Surface* for wet environments where additional traction is needed
- Available with solid black or with OSHA-approved yellow striped borders



Textured Surface



Grip Surface



Striped Border

Black Border

# DuraComfort Mats

Anti-Fatigue Mats • Wet Area • Indoor



**Black Border**  
 Product No. 465 (textured surface)  
 Product No. 475 (grip surface)

**Striped Border**  
 Product No. 466 (textured surface)  
 Product No. 476 (grip surface)

Size (ft.)	Size (in.)	Product Weight*
2' x 3'	24" x 35"	11 lbs.
3' x 5'	35" x 59"	25 lbs.

**Note:** Mat sizes are approximate as rubber shrinks and expands in conjunction with temperature and time. Tolerable manufacturing size variance is 3-5%.

